

Mini 300

Function: Laser pointer with leather holster

Like a rock! As sturdy as a rock. Made of solid brass and weights less than 2 oz.! The most durable laser pointer is available on the market today. Patented pocket clip, smooth chrome finish and belt holster are all designed for your convenience and pleasure. Have fun while using this wonderful tool for your presentation.



Features:

- Includes a leather holster for easy carrying.
- Made of solid brass for long durability.
- Patented ON/OFF clip switch for lifetime of usage.
- Compact size.
- Metal electric plating.

| Specifications: | |
|---|---|
| Dimensions (L x Ø): | 2.32" x 0.59" (5.9cm x 1.5cm) |
| Weight: | 1.7oz. (50.0g) – Incl. batteries |
| Construction: | Solid brass |
| Battery: | 3 x LR44 batteries |
| Battery burn time: | 2 hrs. |
| Wavelength / Range: | 650nm / 500 yards |
| Output power: | CL IIIa, less than 5mW CL II, less than 1mW (Option) |
| Complied with the European Standard EN 60825-1 & USA FDA Laser safety regulations | |

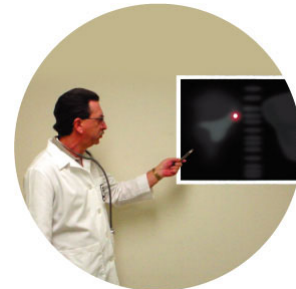
Applications:



Executives and sales professionals



Construction supervisors and inspectors



Medical professionals