

#200

**Function: Laser pointer with keychain**

Unique look and feel in a compact 650nm Laser pointer. Solid brass housing made with fingerprint-proof chrome finish. Completed with keychain.



**Features:**

- The original patented design housing.
- Matte satin chrome plating finish.
- Push button operation.

| Specifications:            |   |
|----------------------------|---|
| <b>Dimensions (L x Ø):</b> | 2.68" x 0.55" (6.8cm x 1.4cm)                           |
| <b>Weight:</b>             | 1.20oz. (34.0g) – Incl. batteries                       |
| <b>Construction:</b>       | Solid brass   |
| <b>Battery:</b>            | 3 x LR44 batteries                                      |
| <b>Battery burn time:</b>  | 2 hrs.  |
| <b>Wavelength / Range:</b> | 635nm / 500 yards                                       |
| <b>Output power:</b>       | CL IIIa, less than 5mW<br>CL II, less than 1mW (Option) |

Complied with the European Standard EN 60825-1 & USA FDA Laser safety regulations

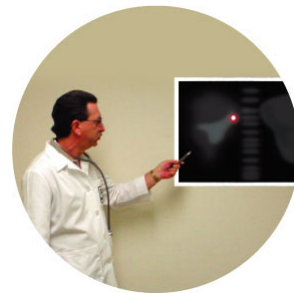
**Applications:**



Executives and sales professionals



Construction supervisors and inspectors



Medical professionals