

## LRF 1000

The first state-of-the-art Laser Range Finder designed for both indoor (1 ~ 30 yd.) and outdoor (30 ~ 300 yd.) measurement. It's an easy to use, broad range and sophisticated electronic instrument, suitable for general constructions, home improvement, interior design, sporting, golfing hunting and many other applications.



### Features:

- Superior design for both indoor (1 ~ 30 yd.) and outdoor (30 ~ 300 yd.) use.
- Computation functions of distance, area, and volume measurement with simple key operations.
- 4 different units of measurement options: meter, yard, feet:inch, and feet.
- 3 exclusive targeting modes for specific situations and environments.
- Illuminating indicators incorporated in the LCD monitor.
- Smart, compact, and ergonomic design.
- 5 memory registers (i.e. M1, M2, M3, M4 and M5) for storing data.
- Suitable for general constructions, home improvement, interior design, sporting, golfing, hunting, and many other applications.

### Specifications:

<b>Laser:</b>	905nm, eyesafe Infrared pulse Laser CL I 650nm, eyesafe CL II
<b>Operating temp. environment:</b>	32°F ~ 113°F (5°C ~ +45°C)
<b>Storage temp. environment:</b>	14°F ~ 140°F (-10°C ~ 60°C)
<b>Min. ranging distance:</b>	1 yard
<b>Normal ranging distance:</b>	300 yards
<b>Accuracy:</b>	Approx. 1 in. under 10 yards for typical Approx. 2 in. under 10 yards for max. 0.2% over 10 yards
<b>Computing:</b>	Yes, + -- ×
<b>Units:</b>	meter, yard, feet:inch, and feet
<b>Automatic shut off:</b>	Yes
<b>Battery:</b>	1 9V alkaline battery
<b>Storage temp. environment:</b>	14°F ~ 140°F (-10°C ~ 60°C)

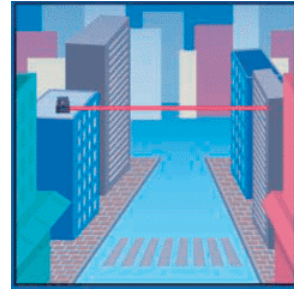
**Applications:**



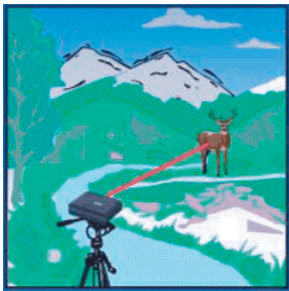
Outdoor activity



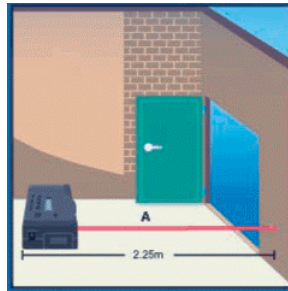
Golfing



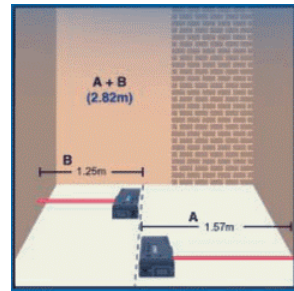
Constructions



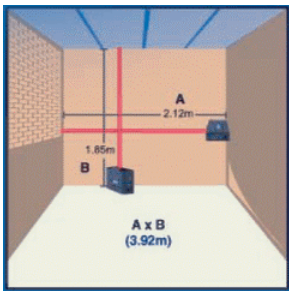
Hunting



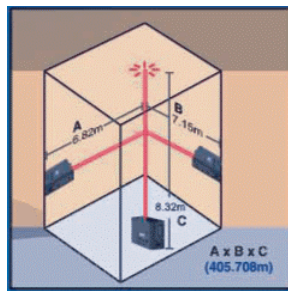
Indoor measuring



Distance calculating (A + B)



Area calculating (A x B)



Volume calculating (A x B x C)